

# PLEINS FEUX #4

## EXHIBITION OF ARTISTS IN RESIDENCE 2023-2024

# LA LOGIQUE DES LIEUX

---

### FROM 25 APRIL AU 23 JUNE 2024

The Fondation Fiminco presents the exhibition of its artists in residence from its fourth promotion. Guest curator Élodie Royer explores the links between living environments, spaces and places, offering a new perspective on the intimate relationship between art and its environment.

With the artists : Pooya Abbasian, Younès Ben Slimane, Célia Boulesteix, Mollie Burke, Sarah-Anaïs Desbenoit, Darius Dolatyari-Dolatdoust, Nicolas Faubert, Quỳnh Lâm, Sophia Mainka, Gohar Martirosyan, Pascale Rémita et Liv Schulman.

### La logique des lieux

*"In Romainville, (...) I wander the streets with my camera always at the ready. I focus on abandoned places. I take close-ups of the materials that inspire me—the cracked paint, the dripping rust, the stains on the walls and pavements, the tangles of vegetation."*

Simone Prouvé,  
2023

These actions by the artist Simone Prouvé, who has been based near the Fondation Fiminco in Romainville for many years, are a good way of approaching the group exhibition *La logique des lieux* and the process that gave rise to it. Conceived over several months in collaboration with the twelve artists who have been in residence in the buildings of this former industrial site, this exhibition is a collection of visual experiments and shared reflections on the influence of our living environments on artistic practices. What it hopes to convey in this way is how the built environment that surrounds us is by no means passive, but rather populates our lives, acting on and participating in our movements, our personal and collective history, and our emotions.

Beyond its horizontal expanse, it is also in its vertical depths and invisible structures that its memory is located, as well as the gestures and flows that have shaped it; in short, the meaning of places and what attaches us to them, in the past as in the future. When they are not limited to a setting or perceived from a distance, what do the places we inhabit do to us and what do we do to them? What influences or memories do they convey? How do they take effect in artistic practices? If one possible definition of the term logic is the analysis of the forms of thought that make it possible to develop a discourse, taking an interest in *the logic of places* would mean looking at them and listening to them more closely, developing a better understanding of the interactions that characterise them, both on their surface and in their historical depth.

Through the imaginary and in their many forms and perspectives, each in their own way, the works in the exhibition highlight the capacity of places to release forces and narratives, and the vitality of the ties that bind us to them, whether those are ancestral, emotional, or environmental. They unfold in two directions, between here and elsewhere, between the influence of immediate territories, such as those that the artists moved through each day (Romainville and the east of Paris), but also that of more distant horizons, those we inherit and carry within ourselves, which I like to think of as these invisible architectures.

By Élodie Royer

# LES ARTISTES EN RÉSIDENTIE

25/04  
23/06  
2024

Fondation  
Fiminc

LA **Fondation Fiminc** PRÉSENTE L'EXPOSITION DES ARTISTES EN RÉSIDENCE : *La logique des lieux*, 25 AVRIL - 23 JUIN 2024

POOYAA BBASIAN, YOUNÈS BEN SLIMANE  
CÉLIA BOULESTEIX, MOLLIE BURKE  
SARAH - ANAÏS DESBENOIT  
DARIUS DOLATYARI-DOLATDOUST  
NICOLAS FAUBERT, QUỲNH LÂM  
SOPHIA MAINKA, GOHAR MARTIROSYAN  
PASCALE RÉMITA, LIV SCHULMAN  
COMMISSAIRE : ÉLODIE ROYER  
AVEC UNE SÉLECTION D'ŒUVRES DE SIMONE PROUVÉ



ENTRÉE LIBRE **43, rue de la Commune de Paris, 93230 Romainville**  
Métro : Bobigny - Pantin - Raymond Queneau

# ÉLODIE ROYER ————— ————— BIOGRAPHY

Independent curator and PhD researcher in the SACRe-ENS Paris programme, Élodie Royer has collaborated with numerous contemporary art structures in France (KADIST, Le Plateau-FRAC-Île-de-France, CEAAC, Palais de Tokyo) and internationally (MOT, Museum of Contemporary Art, Tokyo; Mercer Union, Toronto; GAMeC, Bergamo).

She is currently working on a PhD as part of the SACRe research laboratory, which aims to link practices of women artists in relation to their environmental rootedness, the history of ecological disasters and struggles in Japan, from an ecofeminist perspective.



La Chaufferie, exhibition space © Martin Argyroglo

## THE FONDATION ————— FIMINCO

The Fondation Fiminco has invested a former industrial site in Romainville, on the outskirts of Paris and accessible by the metro, to create a place that supports artists from all over the world and open to all audiences. Designed for artists, this project aims to provide space, tools, and support to create a working environment for artists, across disciplinary practices.

This new cultural district brings all the ingredients necessary for a new ecosystem of contemporary creation intended for artists: an artist residency, exhibition spaces, galleries, and soon live performance structures, craftsmen, associations and a concert hall. By investing in this unusual location, the Fondation Fiminco is pursuing its missions to support contemporary artists and providing cultural access for all, as close as possible to the social and cultural dynamics of the Greater Paris.



Élodie Royer © Andreas B. Krueger

# THE RESIDENTS

## Pooya Abbasian

IRAN

Influenced by cinema, Pooya Abbasian's practice explores how images are constructed, disseminated, and received. Through photography, film, and installation, he aims to make these processes visible to bear witness to the manipulations brought about by the circulation of images, and thus to give them back their visibility and ambiguity. Following on from a series of films exploring different peripheral territories, the works presented here tackle, through different media, the processes of cultural appropriation and gentrification at play in Seine-Saint-Denis. Set in Romainville, his new film explores not only an artists' residence but also the buried history of this territory and its flows, navigating between a documentary and speculative approach.

Born in Iran in 1985, Pooya Abbasian has lived and worked in Paris since 2011.



Exhibition view, *La couleur des ténèbres*, Commissariat Paulo Iverno, 3537, 2023  
© Célia Boulesteix

## Younès Ben Slimane

TUNISIA

Younès Ben Slimane's practice lies at the intersection of film, architecture, and the visual arts. His film and installation work seeks to create a dialogue between these different media to harness their potential and push their limits. He believes that architecture resembles cinema in that it can also be perceived as a succession of sequences, a story that can also provide a sensory and emotional experience. His works explore the atmosphere and spirit of places, with a particular interest in their memorial and poetic charge. *Ruines, sud, couchant* is a visual immersion in three Berber villages in southern Tunisia, where the camera attempts to become one with the landscape, in a bid to reappropriate, through the eye, the architecture that has been neglected at the expense of our contemporary lifestyles, just like the gestures that have shaped them.

Born in Tunisia in 1992, Younès Ben Slimane lives and works between France and Tunisia.

## Célia Boulesteix

FRANCE

Célia Boulesteix collects objects, materials and other fragments of reality in the common spaces of today, like encounters that can arouse emotions akin to an epiphany. Drawing equally on photography and sculpture, her aesthetic vocabulary is based on the anti-monumental and the intimate, opening the way to sensitive and subjective forms and narratives. The installation created in collaboration with Florian Gauthiero for the exhibition is a kind of quixotic sculpture made up of traces of landscapes and reminiscences from research and daily explorations carried out during a residency in Italy and here in Romainville.

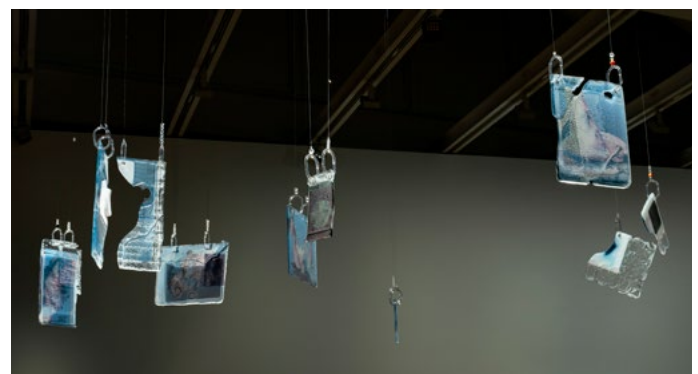
Born in France in 1996, Célia Boulesteix lives and works in Paris.

## Mollie Burke

CANADA

Through a variety of media, Mollie Burke's practice explores the emotions and affects that emerge when we encounter real or virtual environments. Through sculptural and pictorial experimentation, she endeavours to make visible the hidden abstract structures and systems that order our social, economic, and virtual lifestyles and relationships. Her installation is based on the architecture of the Chaufferie and the proportions of its windows, for the role they play both as a boundary and an opening onto a world beyond. Both a volume unfolded in several planes and a silk surface, printed with shapes and imprints derived from objects gathered on daily walks. These objects, often relegated to the status of waste, bear witness to the excess of our society's production, of what it chooses to value or cast aside, somewhere between the effects of desire and consumption.

Born in Canada in 1990, Mollie Burke lives and works between Vancouver and Paris.



Mollie Burke, *Microscopic glitches (side a)*. Component of *Interference*.  
Variable dimensions. Decal printed glass, fisher lures, shower curtain rings, string, light, 2021



## Sarah-Anaïs Desbenoit

FRANCE

Sarah-Anaïs Desbenoit is interested in the mechanisms by which images appear and disappear, and their influence on memory and cognition. Through the construction of miniature architectures and the use of video and sound, she creates installations in the form of immersive landscapes that invite contemplation and a slowing down. Conceived from the collision of architectural fragments (from the Fondation Fiminco site to surrounding or fictitious locations), her new sculptures combine forms, materials, and light projections. Imbued with a certain melancholy, they bring to the fore the invisible structures and mechanisms that mark our daily lives, and the behaviours and affects generated by our ways of living.

Born in Paris in 1992, Sarah-Anaïs Desbenoit lives and works in Paris.

## Darius Dolatyari-Dolatdoust

FRANCE

Darius Dolatyari-Dolatdoust is an artist, performer, and choreographer whose practice questions the relationship between the body and its language. Using textiles as his main medium, his work takes on a variety of forms. Patchworks, paintings, costumes, and set designs all become spaces of transformation and hybridisation, choreographic scores left open to interpretation, in which clothing is often seen as a means of expression and of questioning our identities. The works presented here seek to deconstruct the relationships of domination between the human and the non-human through the imagination of hybrid creatures, as well as exploring notions of cultural heritage by giving voice to the artist's Iranian origins, and the potential for a personal history to become a collective one.

Born in France in 1994, Darius Dolatyari-Dolatdoust lives and works between Brussels, Marseille, and Paris.

## Nicolas Faubert

GABON

The practice of the dancer, performer, and visual artist Nicolas Faubert, while steeped in hip-hop culture, attempts to go beyond the usual perception of space and movement. Blending reality and fiction, his works use a variety of media to express the intimate experience of his visual impairment. His performances are moments of exchange during which he shares his own sensations as an artist, questioning notions of norms, the fringe, and self-transcendence. Most of the works presented here have been produced in collaboration with other artists, associations (notably Heart Street), or collectives based in Seine Saint-Denis and beyond. They combine different forms—video, 3D printing, sculptures, etc.—all driven by a desire to transform representations, images, and discourse to open up other modes of perception.

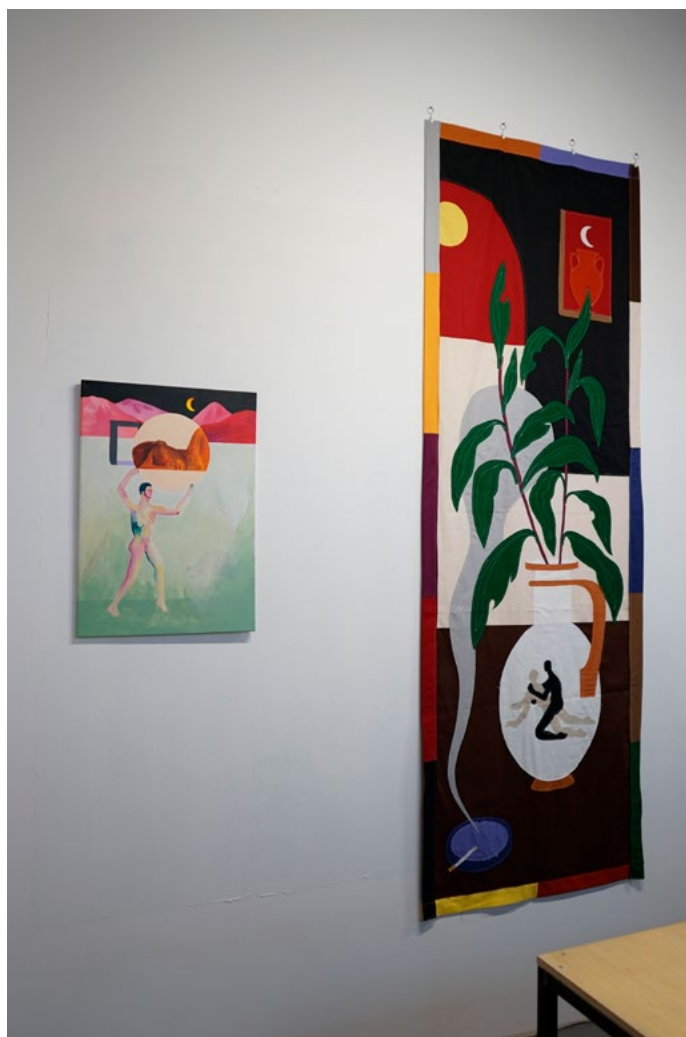
Born in Gabon in 1991, Nicolas Faubert lives and works in Paris.

## Quỳnh Lâm

VIETNAM

Using archives and artefacts, Quỳnh Lâm's practice focuses on the relationships that connect collective and individual memory. She questions the cultural history and geography of cities, with a particular interest in abandoned places and forgotten landscapes. Taking on a variety of forms, from painting to installation, video to performance, her works are the result of fieldwork in search of fragments and sensations that express a poetry of the ephemeral and an empathy with things and nature. *Palais de la mémoire* is a reflection of this, with its fragmented décor bearing the marks of its past use and the many stories and sensitive impressions gathered primarily from the territory and history of Romainville.

Born in Vietnam in 1988, Quỳnh Lâm lives and works between Vietnam and Germany.



*The dreamer and Cold cigaret (vue d'atelier)* © Darius Dolatyari-Dolatdoust

## Sophia ————— Mainka

GERMANY

Sophia Mainka's humorous practice focuses on the interactions between different forms of life and their ecosystems. Through her work in sculpture and film, she aims to undo the separations between nature and culture, object and subject. Her sculptures also make use of certain familiar objects, reconfiguring their functions and questioning their ordinary uses. Taking the environment of the Canal Saint-Martin as her inspiration, her installation interweaves different perspectives, both human and non-human—notably through that of the parrot, the whale, or the dog—in hybrid forms that reflect the sports practice areas present in public space.

Born in Germany in 1990, Sophia Mainka lives and works between Munich and Paris.

Born in Paris in 1992, Sarah-Anaïs Desbenoit lives and works in Paris.



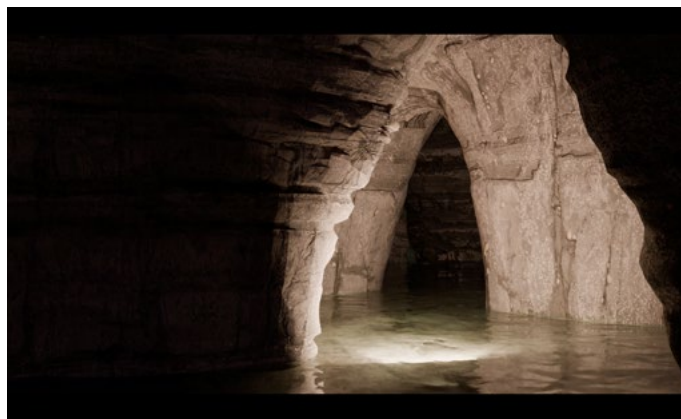
Exhibition view, 2024 © Sophia Mainka

## Gohar ————— Martirosyan

ARMENIA

In his film practice, Gohar Martirosyan examines the sets of influences that participate in the construction of a person or an identity, whether they come from historical events, cultural practices, social ties, or relationships with different forms of living things. Using archival images and technological processes, her video installation brings together inaccessible geographies, once inhabited by human activity, and originating in the artist's own biography. From the summit of Mount Ararat, the symbol of the Armenian people's attachment to its territory which is now located on the Turkish border, to a descent into the depths of the ancient quarries of Romainville, *Inaccessible Depths* is a sonic and virtual journey through geological time and a land imbued with memory.

Born in 1991 in Armenia, Gohar Martirosyan lives and works between Gyumri and Paris.



Gohar Martirosyan, *Screenshots from Inaccessible Depths*, three-channel video and live generated sound installation, 20 minutes, 2024

## Pascale ————— Rémita

FRANCE

Pascale Rémita's pictorial approach questions our ways of perceiving reality. With a sensitive eye for the environments in which we live and what connects us to them, the artist creates paintings in series and videos based on personal archives or images sourced from the media. Drawing on her history and dual Franco-Algerian culture, the body of work presented here evokes an inherited territory, that of Algeria, to which she has never returned since her early childhood. The way in which the works are set against each other and shift between different media, give shape to this forthcoming journey to come, as if it were first necessary to anchor oneself in the imagination and explore the materials of memory (from Zellige tiles to ceramic pillows inviting dreams) in order to repair the connections to our subjective geographies.

Born in France, Pascale Rémita lives and works between Paris and Nantes.



Pascale Rémita, *Sans titre*, 2019, oil on canvas 120 x 160 cm, Photo © Germain Herriau

# Liv ————— Schulman

ARGENTINA

Liv Schulman's work, in the form of TV series, lecture-performances, and fictional narratives, is built around discourses on the place of subjectivity in political and social space, and the difficulty of relating to that space. In her approach, creation involves sharing the direct experience of an environment, a system, and a subject, as in the *Descartes-Borderline* performance presented here. In a space made up of cardboard walls, like a set waiting to be activated, performers move around, revealing fragments of bodies and objects through various openings, in support of the narrative that is unfolding. Through different layers of stories, anecdotes, and references, the audience witnesses the staging of a performative approach that sets out to assemble a profound reflection on the social construction of our intimate and collective affects. Born in Argentina in 1985, Liv Schulman lives and works in Paris.



Liv Schulman, *Brown, yellow, white and dead*, episode 1, mini-série, video 4k, 2020

## INFORMATIONS

Plein Feux #4, Artists in residence exhibition.  
*La logique des lieux*

**Opening times:** tuesday to saturday from 2 to 6 pm  
Free admission

**Fondation Fimincó**  
43 Rue de la Commune de Paris 93230 Romainville

**Métro:** Ligne 5 – arrêt Bobigny-Pantin-Raymond Queneau

**Bus:** 147 – arrêt Église de Pantin-Métro, 145 et 318 – arrêt Louise Dory

**Velib:** Station n°32303 – Gaston Roussel – Commune de Paris

## PRESS CONTACT

Samantha Bergognon 06 25 04 62 29

[samantha@art-et-communication.fr](mailto:samantha@art-et-communication.fr)

Sylvie Robaglia 06 72 59 57 34

[sylvie@art-et-communication.fr](mailto:sylvie@art-et-communication.fr)

## AROUND THE EXHIBITION

The exhibition will be activated by cultural events for all ages: free guided tours, performances and meetings. You can find the dates and times on our website, in the events section: [www.fondationfiminco.com](http://www.fondationfiminco.com)

## CONTACT

[contact@fondationfiminco.com](mailto:contact@fondationfiminco.com)



@fondationfiminco



@fondationfiminco



@fondationfiminco



[fondationfiminco.com](http://fondationfiminco.com)



@ffiminco

